

- ☒ Binary inputs and outputs
- ☒ Analog inputs 4-20 mA (2)
- ☒ Serial communication port for external devices (RS 232/422/485), isolated
- ☒ Data logger with 0,1 sec. resolution
- ☒ RTC Real Time Clock
- ☒ Programmable logic controller (PLC)
- ☒ Modbus RTU communication protocols
- ☒ Removable terminal blocks
- ☒ Easy configuration software



The 101 is a extension module for MT family of telemetry modules. It is optimized for use in advanced measurement systems equipped with 12/24V power source. Additionally, it can act as a universal I/O station with galvanically isolated RS232/485/422 Modbus RTU interface. The ability to run local control program allows to use HLX101 module as freely programmable PLC.

Resources

- 8 optoisolated binary / counter inputs 24V DC (I1 - I8)
- 8 configurable binary outputs / inputs / counters 24V DC (Q1 - Q8)
- 2 optoisolated analog inputs 4-20 mA (8 bit acc./10 bit res.) with configurable hysteresis and filtration
- Isolated serial port RS 232/485/422
- RTC with external synchronization functions
- Firmware Flash memory with local update capability

- Unsolicited messaging
- Event triggered Data Logger
- Simple, multipoint alarm configuration for both binary and analog inputs
- Additional manual alarm level setting capability for analog inputs A1, A2 (front panel push buttons)
- External, optoisolated RS 232/422/485 serial port for data transmission
- Configurable access security - password
- DINrail mounting
- Power supply 12/24V DC, 24 V AC
- Removable terminal blocks
- Diagnostic LED's (status, serial communication activity, I/O status)
- Local logging of measurement results
- Local execution of user program
- 4 programmatic clocks TMRx – Asynchronous and Synchronous
- Can be use like standalone programmable PLC
- Mainpower failure signalization - FS1\_UPS
- Support for external text or graphics modbus displays



General

Dimensions (length x width x height)	105x86x60 mm
Weight	300 g
Mounting	DIN Rail 35mm
Operating temperature	-20 ... +50°C
Protection class	IP40
Max. voltage at all connectors relative to device's GND.	60Vrms max

Power supply

Voltage range (DC) 12,24V	10,8 ... 36 V
AC (24V)	18...26,4 Vrms
Input current (A) (for 12V DC)	Active 0,20
Input current (A) (for 24V DC)	Active 0,10

Inputs I1...I8

Input voltage range	-36 ... 36 V
Input resistance	5,4 kΩ
Input voltage ON (1)	> 9V min.
Input voltage OFF (0)	> 3V max.

Inputs Q1...Q8

Maximum input voltage	36 V
Input resistance	5,4 kΩ type
Input voltage ON	> 9V min
Input voltage OFF	< 3V max.

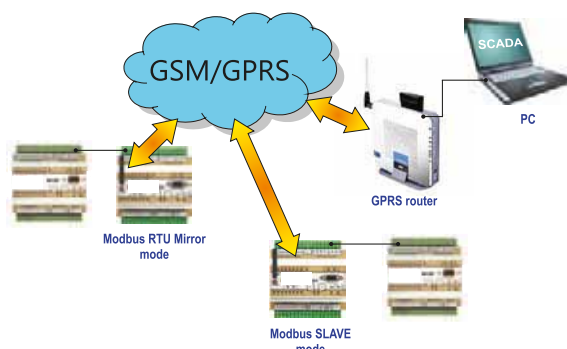
Outputs Q1...Q8

Recommended average current for single output	50mA
Single output current	350mA max
Mean current for all outputs	400mA max
Voltage drop at 350mA	<3,5V max.
Off state current	< 0,2mA max.

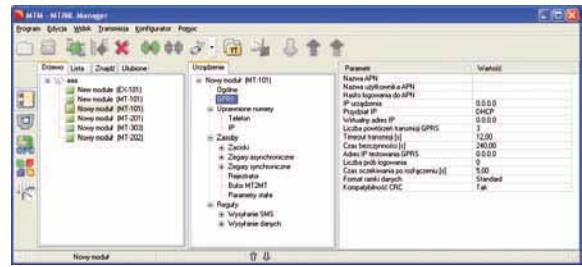
Analog inputs A1, A2 (4...20 mA)

Input current	4...20mA
Maximum input current	50mA max
Dynamic input impedance	25Ω type
Voltage drop at 20mA	<5V max.
A/D converter	10 bits
Accuracy	+/-1,5% max.
Nonlinearity	+/-1% max.

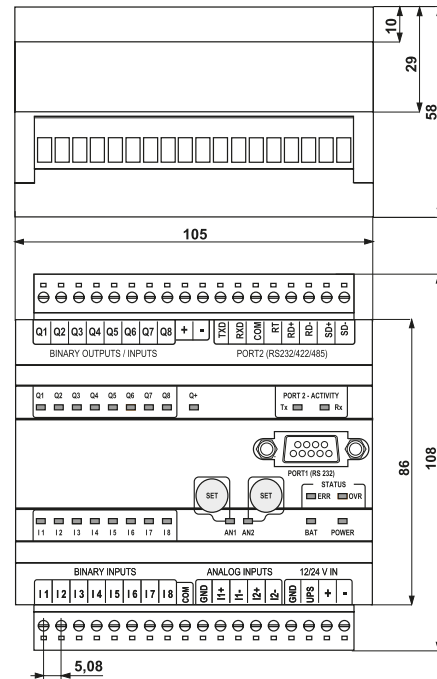
Sample configuration



Configuration utility



Drawings and dimensions (in millimeters)



Additional info:



Digitron Italia S.r.l. Via ASI Consortile, 7 03013 Ferentino

(FR) Italia Tel (+39) 0775 392052 Fax (+39) 0775 223835

www.digitron-italia.com

e-mail:info@digitron-italia.it